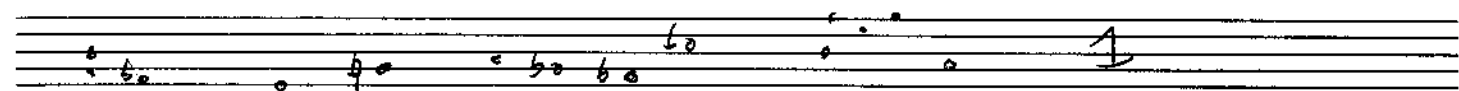
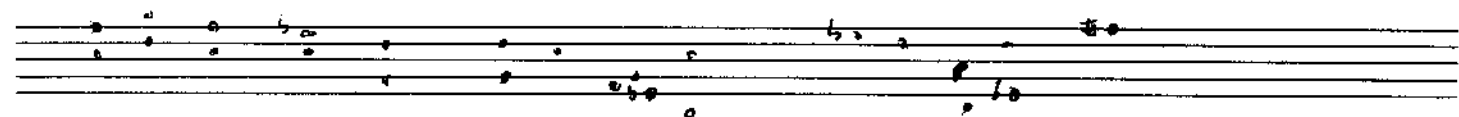
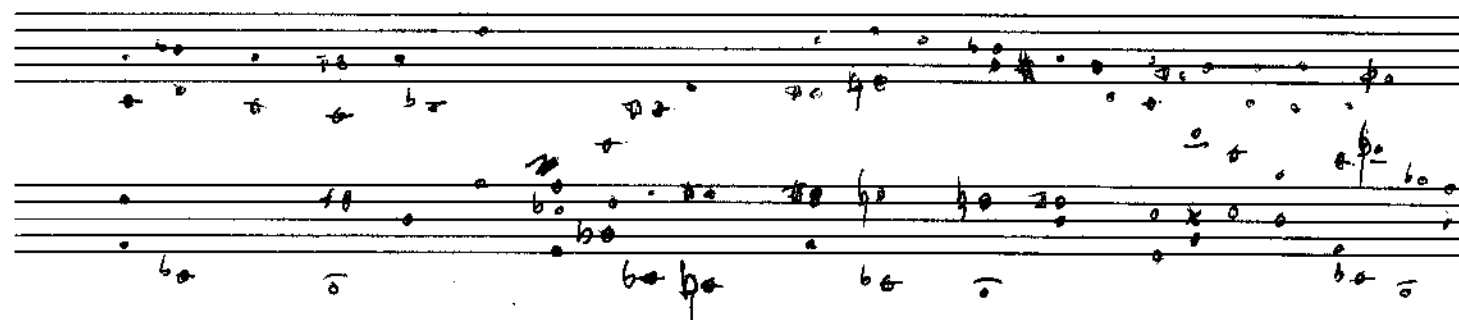
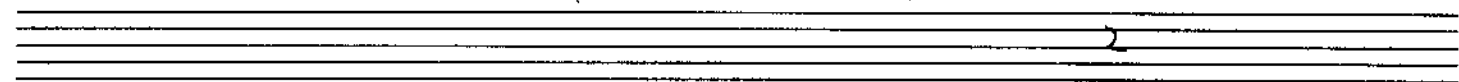


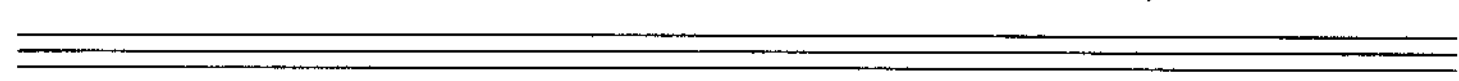
whats new key of G



| G E- | F- B<sup>b</sup> | E<sup>b</sup> C- | A- D<sup>7</sup> | ~~A<sup>7</sup>~~ C<sup>7</sup> | A- D<sup>7</sup> | G D<sup>7</sup> C- | A- D<sup>7</sup> |



| ~~A<sup>7</sup>~~ G<sup>7</sup> |



| C A- | B<sup>b</sup>- E<sup>b</sup> | A<sup>b</sup> F- | D- G<sup>7</sup> | C- A<sup>b</sup> | D<sup>b</sup> G<sup>7</sup> | C- | A<sup>b</sup> G<sup>7</sup> |

